

# TemerTalk

Delivered FREE to every household

February 2024



## In this issue

**Pancakes • Climate change • Aladdin • Films  
and all your parish news**

**ROCHFORD | EASTHAM | THE HANLEYS | STOKE BLISS & KYRE | STANFORD**

# G HERBERT BANKS

EST. 1898



## 125 Years of Professional Property Advice

- |  |  |
|--|--|
|  Estate & Letting Agents        |  Land & Estate Management   |
|  Landlord & Tenant Negotiations |  Planning Consultants       |
|  Auctioneers                    |  Rural Consultancy Services |
|  Chartered Surveyors            |  Professional Services      |
|  RICS Registered Valuers        |  AMC Finance                |



RESIDENTIAL • AGRICULTURAL • COMMERCIAL

Chartered Surveyors & Estate Agents

01299 896 968 | [gherbertbanks.co.uk](http://gherbertbanks.co.uk)



## CARPET AND UPHOLSTERY CLEANING SPECIALISTS

- Fully trained and insured operators
  - Latest equipment
  - Minimum drying times
  - We move furniture
- Customer satisfaction guarantee
  - Oriental rug specialists
  - Stainshield treatment
  - Deodorizer treatment
  - Quotations on request

### Carpet and Upholstery Cleaning Specialists

Highfields, Knightwick, Worcestershire WR6 5QG

01886 821554 or 07971 603007

# TemeTalk

EASTHAM • ROCHFORD • STOKE BLISS & KYRE • THE HANLEYS • STANFORD

*A community going forward with God*

## February 2024

Published by the churches of the  
Teme Valley South Group  
*and delivered free to every household*

Designed and typeset by  
Sandra Griffiths  
Telephone 01568 750665  
ronsmum@icloud.com

Printed by  
Orphans Press, Leominster

**Editor:**  
Sandra Griffiths  
Grey Gables, St Michaels  
Tenbury Wells WR15 8TW  
Telephone 01568 750665  
ronsmum@icloud.com

**Distribution:**  
Alison and Keith Tompsett  
(Stoke Bliss & Kyre)  
Averil Opperman  
(The Hanleys, Eastham and Rochford)  
Sue Softly (Stanford)

**Priest-in-charge**  
Rev Julia Curtis  
Telephone 01886 853286  
revjuliacurtis@gmail.com

**Parish website**  
[www.temevalleysouth.org.uk](http://www.temevalleysouth.org.uk)

Items for inclusion should be  
sent to Sandra Griffiths  
by the 18th of the preceding month  
and will be included subject to space

## Dear Readers

Lent and Valentine's Day fall together this year and are occasions that celebrate love in different ways. Lent is a time of fasting, prayer and repentance, when Christians prepare for the death and resurrection of Jesus Christ, who died on the cross for the sins of humanity. Lent is also a time of expressing gratitude and devotion to God, who gave his only Son for the salvation of the world. Valentine's Day is a time of celebrating romance and affection, when people exchange cards, gifts and messages with their loved ones. Valentine's Day originated from the legend of Saint Valentine, a Christian priest who was martyred for performing marriages for persecuted Christians in ancient Rome.

However both Lent and Valentine's Day can also inspire us to show love to our neighbours and our community, as was the case in the recent pandemic that challenged our social bonds and wellbeing. During Lent we can practise self-discipline, generosity and compassion, by giving up something we enjoy or engaging in acts of charity. During Valentine's Day, we can express gratitude, appreciation and kindness, by saying thank you, giving compliments or doing something nice for others. We can also use both occasions to reach out to our neighbours and help them in various ways:

- Grocery shopping, running errands or checking on and offering companionship to neighbours.
- Improving the quality of life in our communities, such as supporting and organising events.
- Donating to or volunteering for a local charity or organisation that supports the vulnerable.

Lent and Valentine's Day are not just dates on the calendar, but opportunities to love. Love is not only a feeling, but a choice and an action. Love is not only for ourselves, but for others. Love is not only for God, but from God. As the

*Continued on page 3*

This month's cover photograph  
Fun in the snow by Liz Cattani

Advertise your event FREE  
in TemeTalk and reach 660  
households in seven parishes



## STAY AT HOME Home Support

*A break can be good for everyone*

### We provide

- Respite in your own home
- Night sitting
- Day sitting
- Support to access the community, inc appointments and socialising

Get in touch for a chat or a free  
no-obligation quote

**Susan Grazier**

T: 01299 270675

M: 07969 673092

E: stayathome-homesupport@live.com



If your oven needs a spring clean,  
Ovenmagic is the cleaning  
service for you

Ovens ★ Hobs ★ Extractors

For more details telephone  
01905 700500 or 07974 807118  
or visit [www.ovenmagic.me](http://www.ovenmagic.me)

*Ovenmagic is an independent  
fully insured company*

## Teme Valley South Contacts

**Priest-in-charge:** Julia Curtis 01886 853286

**Assistant Curate:** Jen Jones 07749 977821

**LLM Reader:** Pete Thorp 07917 783159

**Retired clergy:** Robert Barlow, Sally Jones

### Churchwardens

**Eastham:** Celia Adams 01584 781258

**Rochford:** Ann Prosser 01584 781317

**Stoke Bliss & Kyre:**

**Hanleys:** Ed Yarnold 07930 882728

**Stanford:** Robin Dean 01886 853295

### Pastoral Team

**Stanford:** Lesley Dean 01886 853295

**Hanleys:**

**Stoke Bliss:**

**Rochford:** Ann Prosser 01584 781317

Jenny Barbé 01584 781298

**Eastham:** Mel Williams 01584 781284

**Parish Safeguarding Officer:** Sue Softly

## Village Hall Bookings

### Stoke Bliss & Kyre

Janet Powell, 01885 410598

[stokeblisskyrevillagehall@gmail.com](mailto:stokeblisskyrevillagehall@gmail.com)

**Rochford** – Ann Prosser, 01584 781317

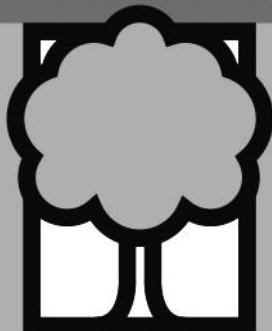
**Eastham** – Helen Matravers, 07580 158673

**Hanley** – Judy Bayliss, 01886 853813

**Stanford** – Catherine Mawby, 07831 303792

[stanfordwithorletonvillagehall@gmail.com](mailto:stanfordwithorletonvillagehall@gmail.com)

## TREE SURGERY & HEDGE TRIMMING



**MULBERRY  
TREE SERVICES**

**Lee Johnson**

T: +44 (0) 1584 781034

M: +44 (0) 7808 174 904

E: [mulberrytreeservices@gmail.com](mailto:mulberrytreeservices@gmail.com)

# Parish news

*Continued from page 1*

Bible says, "We love because he first loved us" (1 John 4:19). Let us use this time to love God, ourselves and our neighbours and to make our world a better place.

*Pete Thorp*

*Reader Teme Valley South Group of Churches*

## From the Registers

### Baptism

Elijah Benedict Hazeldine, baptism service at St Mary's Church, Stanford on Teme, on 9th December 2023.

### Funerals

Our sympathy and prayers are with the family and friends of:

**Iris Rosemary Bradley**, funeral service at St Michael's Church, Rochford followed by burial of ashes in the churchyard on 20th December 2023, together with

**Arthur Frederick John Bradley**, burial of ashes at St Michael's Church, Rochford on 20th December.

*May the souls of the departed, through the mercy of God, rest in peace.*

### A quiet day

... is taking place on Wednesday 20th March at Holland House, Crophorne. The day will be led by Rev'd Julia Curtis, beginning at 10am and finishing at 4pm with coffee on arrival, lunch and afternoon tea.

This is a wonderful opportunity to enjoy some spiritual refreshment in the uplifting and peaceful setting of Holland House, where the gardens wind gently down to the banks of the River Avon. Please do come if you wish, you will be most welcome. For further details please contact Pat Snelling, email [patricia.snelling@btinternet.com](mailto:patricia.snelling@btinternet.com) or phone 01886 812443.

## Eddie's Exterior Cleaning Service



We clean patios and driveways  
We offer a patio and driveway  
sealing package  
and more ...

For that professional service and finish  
call me on 07817 795161

Pureseal approved applicator



## Lent group

See page 13. Lent groups are taking place across the rural mission area with a selection of times and one zoom offer. Please contact Rev'd Julia if you are interested in being part of one.

## Teme Valley Tots

Sessions continue in Rochford village hall during February from 10.30am to 12 noon on Fridays. We'll take a break for half-term, so no session on 16th February.

## Music in Teme Valley South

Our first choral evensong for the Teme Valley Churches Choir will be on 4th February at 4pm at St Mary's, Stanford. Do come along and enjoy this musical offering.

## Just the job for you?

Do you have a few hours to spare? Do you enjoy listening and organising? The PCC is still looking for a minutes secretary if you have a little time to spare.

*Rev'd Julia*

## TemeTalk

email [ronsmum@icloud.com](mailto:ronsmum@icloud.com)  
or call 01568 750665

## A H CALDICOTT & SONS Funeral Directors

**Burials  
Cremations  
Chapel of Rest**

**15 MARKET STREET  
TENBURY WELLS**

**01584 810281**

**01584 891502 after 6pm**

**A family run business  
established 1919**



## Rochford 49 Club

*Congratulations to this month's  
£25 winners!*

### Wednesday winners

20th December No 16 Sue Gumley  
27th December No 42 not sold  
3rd January No 55 not sold  
10th January No 02 not sold  
17th January No 35 Gary Burns

### Saturday winners

23rd December No 44 Dan Taylor  
30th December No 38 not sold  
6th January No 41 not sold  
13th January No 07 Jon Adams

There are still plenty of numbers available – why not join in? It's just £1 per draw and the profits are split between Rochford church and the village hall – plus you get two chances each week to win £25!

Remember, you must be in it to win it!  
Ring Gill Smith on  
**07815 030050**

### TemeTalk

deadline 18th February  
ronsmum@btconnect.com

## Teme Valley Tote

December's draw, the ninth in this series, was decided when Rev'd Julia Curtis rolled the dice on 2nd December to select the set of random numbers. Prizewinners are:

£50 – **Diane Ralph** of Eastham (No 285)  
£30 – **Family Burgoyne** of Stanford (No 530)  
£20 – **Mr M Hogan** of Knighton (No 677)

January's draw, the tenth in this series, was decided when Rev'd Julia Curtis rolled the dice on 4th January to select the set of random numbers. Prizewinners are:

£50 – **Mr & Mrs Chapman** of Eastham (No 264)  
£30 – **Wendy Day** of Lindridge (No 144)  
£20 – **Family Burgoyne** of Stanford (No 577)

You can still take part in the tote. If you have any queries please contact Robin Dean on 01886 853295 or email robin.c.dean@gmail.com.

## Table tennis at Hanley

If you would like to join in the fun come along to Hanley Village Hall on Monday evenings at 7pm.  
Bats and balls are provided  
Your first taster session is free, then it's just £3 per evening.

## CHARLES MAIDEN

EST 1988

### Waste Disposal Ltd



**Routine and emergency emptying of domestic and commercial**

- SEPTIC TANKS
- TREATMENT PLANTS
- ALL SEWAGE SYSTEMS
- BLOCKAGE CLEARANCE
- GREASE TRAPS

throughout Herefordshire, Shropshire and Worcestershire

Call us now for your free quote

**01885 482305**

info@charlesmaidenbromyard.co.uk

www.charlesmaidenbromyard.co.uk

# Rochford News

## Happy New Year

As the year begins we are thinking about activities and events which will engage and be enjoyed by Rochford residents and the wider community. In 2023 we had a pancake evening, lambing church, open gardens, the King's coronation and scarecrow competition, the village fête, music events and a quiz, as well as Teme Valley Tots and neighbourhood lunches. Most events have been well supported but if you have any suggestions for events you think would be good for Rochford, please let us know and get involved.

## Christmas in Rochford

Christmas was well celebrated in Rochford – thanks to everyone who helped with and supported all the Christmas events. Over 50 people enjoyed Ann's Christmas lunch and we had a full church for the carol service. We had another full church at the midnight service on Christmas Eve with mince pies and mulled wine – many thanks to Jon Adams for the lovely Christmas tree in the church. Huge thanks to Ann who provided over a hundred Christmas dinners and hundreds of mince pies. We are so lucky to have her.

## Neighbourhood lunch

It was great to see so many people sitting down for the Christmas neighbourhood lunch. Dates for sit-down and takeaway neighbourhood lunches are 27th February, 26th March, 30th April and 28th May. Everyone is welcome. Booking for lunches is essential and takeaways should be collected between 12.30 and 1pm. Please book with Ann on 01584 781317 at least the previous week.

## Pancake evening

Rochford pancake evening is on Shrove Tuesday, 13th February at 7pm at Rochford Village Hall. Forget cooking that evening – there will be a wonderful selection of sweet and savoury pancakes. This is open to everyone so please book early with Ann on 01584 781317. Just £10, under 10s half price. No bar, please bring your own drink.

## Teme Valley Tots

Teme Valley Tots, on Fridays from 10.30am to 12 noon at Rochford Village Hall, is going from strength to strength. It's good to welcome new tots to the group as older ones move on. Thanks to all the volunteers who help. Please contact Ann if you would like to help.

## Snowdrop Songs of Praise

Come along on 11th February at 3pm and sing your favourite hymns. The service will be followed at 4pm with snowdrop themed activities for all ages and tea and cake in the village hall.

## Church flower rota

February – Jackie Hughes

February/March – Lent

March/April – Easter lilies, Jennifer Gledhill

(Donations for Easter lilies please to Jennifer or Ann.)

## Polite notice

If you need to park short term in the hall car park, please check with Ann that it is not required for a function. It's not a public car park!

## Contacts

Ann on 01584 781317, Andrew on 07809 658484 or through the parish WhatsApp group

*Andrew Barbé*

**Advertise your event FREE in  
TemeTalk and reach 660  
households in seven parishes  
email [ronsmum@icloud.com](mailto:ronsmum@icloud.com)**

**AQUA CLEANSING LTD.**

**SEPTIC TANK EMPTYING**

- Cesspool & Pump Stations
- Soakaways
- Blockage Clearance
- Sewage Treatment Engineers
- Pumps, Compressors & Servicing
- CCTV Drainage Surveys



[www.aquacleansingltd.co.uk](http://www.aquacleansingltd.co.uk)  
[enquiries@aquacleansing.co.uk](mailto:enquiries@aquacleansing.co.uk)

Call us now for free advice & quotation

**01886 888471**

**Berrow Green Road, Martley, Worcester WR6 6PQ**

*Fast reliable service established for over 30 years*

# Stoke Bliss and Kyre

## Guardians of Hollow Meadow (GOHM) CIC

We are delighted to let you know that a year after the initial idea was mooted, the GOHM CIC has come into being to enhance the nature and biodiversity of this site in Stoke Bliss and secure its future. Over the coming year we also aim to host small courses on-site for nature, crafts and wellbeing.

We are working with Natural Networks, Severn Rivers Trust and Coronation Orchards to secure some grant funding for major project, and have received donations from a growing group of supporters and volunteers.

If you would like to visit and learn more about our aims, volunteer or donate, please contact us on hollowmeadow23@gmail.com. Thanks for all the support and encouragement from near and far that has made this happen.

## Neighbourhood Lunch



Stoke Bliss & Kyre Village Hall  
Thursday 8th February  
Thursday 14th March  
Welcome at 12.30pm



Telephone 01885 410641 or email  
lunchkasb@aol.com if you would like to come

## Firewood

Seasoned hardwood  
or softwood mixtures

Cut and split

Barn stored

Any load size delivered

01584 881698

OR

07817 691383

## Social & Pub Night

Friday 23rd February

Friday 22nd March

Bar opens at 7, supper served at 8pm  
Stoke Bliss & Kyre Village Hall

Supper £5 (optional), dessert £2.50 (optional)

Reserve your meal with Julia on  
sbkvilleagehall@gmail.com or 01885 410368

## Yoga class

at Stoke Bliss & Kyre Village Hall

Tuesday mornings from 10 to 11am

Please contact Karen on 07789 913425



## A M Plumbing & Heating

General Plumbing

Oftec approved

Bathrooms

Oil boilers

Hot water cylinders

Serviceing

Fully insured, 14 years' experience

07565 181554

anthony.marston@hotmail.co.uk



## The Apple Tree Kitchen

01886 812 431

WR6 6DX

Set in the beautiful grounds of Pitlands Farm Holidays

| Fully licensed | Breakfasts | Lunches | Cakes | Coffees |

| Afternoon Teas | Gardens & Grounds |

| Children's Playground |

| Function room available with catering

for every occasion |

Open Thursday - Sunday 9.30am - 5.00pm

[www.theappletreekitchen.co.uk](http://www.theappletreekitchen.co.uk)

[info@theappletreekitchen.co.uk](mailto:info@theappletreekitchen.co.uk)



# Eastham Jottings

## Church flowers and cleaning

February – Stuart and Josie Ward

March – Celia Adams

## Eastham Coffee Morning

The next Coffee Morning will be on Wednesday 7th February at 10.30am at Eastham Memorial Hall. Join us for coffee, the monthly raffle and a catch up. The theme will be “old pictures of Eastham” – please bring along anything you have.

The December coffee morning proceeds were donated to Air Ambulance – £100 in total.

The rota is:

Wednesday 7th February – Helen Matravers

Wednesday 6th March – Alison Neary

## Ludlow Male Voice Choir

Ludlow Male voice choir turned out in force to perform the final event of the year in Eastham Memorial Hall on 16th December. 23 choir members conducted by Darren Clark braved the elements to entertain friends, family and Eastham residents with three hours of rousing singing.

Jane Hughes provided the piano accompaniment to keep the music bouncing along with a range of popular classics in the first half. Refreshments at half time of chilli or hot dogs kept up the energy for the singing in the second half where the audience was encouraged to join in with some favourite Christmas carols.

Thanks to the choir, the organisers and the many people who turned up and made the evening a great start to the Christmas holiday.

## Christmas as St Peter and St Paul's, Eastham

Toy coins and chocolate sprouts were in excess at the Christmas Day service – thanks to Pete for a challenging Christmas quiz that kept everyone guessing.

Many thanks to Nicky Webb and Louisa for the wonderful Christmas tree that won the Stanford Tree Festival and returned to Eastham church for Christmas.

The collection of £100 went along with other donations to Air Ambulance making a joint donation of £430 from Eastham. Mary Holloway was with us on Christmas Day, and we are delighted that she now lives in Eastham.

## Eastham freestyle litter pick

Please save the date – Saturday 16th March in the morning. More details next month.

## Eastham Pub Night

Friday 16th February at 7 pm at Eastham Memorial Hall. Make a date for this informal get together.

## Donations

During 2023 St Peter and St Paul's donated £200 to the Tenbury Food Bank and, along with the Memorial Hall, £430 to Air Ambulance from four events (December coffee morning, Georgina Painter Black's wreath class, Ludlow Male Voice Choir event and the combined hall event in November). Thanks to everyone.

The Poppy Appeal raised £37.02 from Eastham (£1,733.80 from the district plus £202 from Kyre).

## Church and churchyard spring clean

Please come on Saturday 27th April and help with the spring tidy up of the churchyard from 10am to 12.30pm followed by a barbecue. At the same time we will be tidying up the inside of the church for the summer months. Please bring along garden utensils, dusters, and mops. Everyone welcome!

## New picture heaters

Come and see our new picture heaters in the Memorial Hall with pictures of the old Eastham bridge (thanks to Andrew and Sheila Mawby of Abberley), Death's Dingle waterfall (thanks to Mike Palfrey), mistletoe gatherer (thanks to Matt Hall) and Eastham church at night (thanks to Simon Lusty of Nash).

The project has been financed from the 50/50 split of fête funds between the hall and the church – thanks to everyone.

Entries are invited for more pictures of Eastham to be judged in the summer with the winners being made into canvasses. Get snapping!

*Celia Adams*

## More Eastham Jottings on page 19

	JOE CHURCHILL AERIAL AND SATELLITE ENGINEER
<b>TEME VALLEY AERIALS</b>	07903 837814 TEMEVALLEYAERIALS@ OUTLOOK.COM
AERIAL INSTALLATIONS   SKY+ AND FREESAT INSTALLATIONS FAULT FINDING AND REPAIRS   TV WALL MOUNTING   TV POINTS TO ADDITIONAL ROOMS   FM AND DIGITAL RADIO IN- STALLATIONS   CCTV INSTALLATIONS	

# Hanley Happenings

## Happy holidays in Hanley

Christmas and New Year were busy times in the Hanleys. Everyone enjoyed the reminder of what Christmas is all about at the Nativity service at Hanley William. The festive supper and New Year's Day opening at Hanley House were well attended; it was especially nice to see so many new faces enjoying chilli or soup plus a swift half in a convivial atmosphere on 1st January. I actually enjoyed a very nice glass of wine!

## Bingo!

Many thanks to everyone who attended the family Christmas bingo on 17th December. We had to put out more tables as there were so many people! We raised a fantastic £344.50, with £50 going to the Stroke Association.

There will be a family Easter bingo on 30th March – pop it in your diary!

## Taxi!

On New Year's Eve Dev, our local taxi man, took a large jam jar with him on his travels and encouraged his passengers to deposit their loose change. He raised a magnificent £78.20 for our village hall. What a brilliant initiative, many thanks to Dev!

*Carole Gardner*



HANLEY HOUSE

## VALENTINES SUPPER CLUB

16TH FEBRUARY - 7PM

Nibble to share

Main

Beef and pheasant casserole  
served with braised red cabbage & crunchy potatoes

Dessert

Plum crumble with cinnamon cream

£25 per person

## FRIDAY CURRY NIGHT

8TH MARCH - 7PM

Onion bhajis served with raita

Main

Homestyle chicken curry served with chapatti

Dessert

Chopped tropical fruit palette cleanser

£26.50 per person

Vegetarian/vegan option available

Reserve at [www.hanleyhouse.co.uk](http://www.hanleyhouse.co.uk)

## Ron Owen

19th May 1925 to 29th December 2023

Ron lived at the Old School House, Broadheath from 1947, when he married Ruby in Hanley William church, until 1975 when they moved to Malvern.

He was well known locally: he was church warden for Hanley Childe church from 1965 until he left the village. He was also manager and player for Broadheath Football Club and is remembered by the local teenage boys of the 1960s for his football skills and coaching.

Our condolences go to Jenny, Trevor and their families.

## Thanks to Tracy

Everyone from the Hanley village hall committee would like to thank Tracy Stuart-Allen as she steps down as treasurer.

Tracy has supported the hall and the local community for many years, managing the finances and all the extras this involves, contributing to the maintenance and organising outside help, obtaining a cost effective contract from our electricity provider and giving monthly meter readings to keep the information accurate.

The film nights that she has run for many years have been very popular in the past and the ones involving a meal with one of her "inventive" themes continue to be very well attended and a good fund raiser for the hall.

We hope that Trace is enjoying life free from these responsibilities. Her support and commitment has been invaluable.

## Welcome

Welcome to baby Isabelle Amelia Williams born on 2nd December 2023.

## HANLEY VILLAGE HALL FOR HIRE

Do you want to host an event or class/group for the community?

Hire our hall for £30 per day

Hourly rates negotiable

Contact **Judy Bayliss** on **01886 853813**

for more information

*Raising funds for the village hall refurbishment*

# Stanford • Stanford • Stanford

## Services in Stanford

### Sunday 4th February

Holy Communion with hymns at 10am

Evensong at 4pm with the Teme Valley South Choir – please come along and support them!

### Sunday 3rd March

Holy Communion with hymns at 10am

Evensong at 4pm

**Easter Day** is on 31st March. During Holy Week there will be an evening service at St Mary's on Maundy Thursday and our Dawn Service at 6am on Easter morning – more details next month.

## Tree pruning

There will be a pruning demonstration at Stanford with Orleton village hall orchard at 2pm on 3rd February, £5 per residence including tea and coffee. Come along and see how your trees have prospered. Book with David Lane on 07506 695432.

We have other events in mind for the spring including a wine tasting. Please let me know if you have any other ideas for events.

## Stanford Christmas Tree Festival

What a marvellous weekend! We had 25 trees and raised £1,060 to be shared between Ninevah Ridge Care Farm and St Mary's Church. Thanks to Sam Satchell (communications officer for the diocese) who judged the trees for the Bishops Cups. The results were Schools and Nurseries Bishop's Cup: Clifton Primary School; Bishop's Cup: Eastham Church; People's Choice (votes by people attending): Great Witley Primary School.

Thanks to John Curtis for the overall organisation and to Sue for mulling etc. Thanks to David Lane for the floodlighting and supplying the boards for resting the trees on. Thanks to Clem for helping John with the construction of the angel tunnel and setting up trees. Thanks to Daisy for social media promotion, keeping the children busy and distributing the mulled wine! Thanks to Stuart for generously paying for the electricity used over the weekend. Thanks to Louise of Angel Gardens for supplying the trees. Thanks to Corinne for playing her cello for us on Saturday afternoon. Thanks to Chloe for conducting the new Teme Valley South Choir, to Milada for playing the organ and to the choir for helping us raise the roof on Sunday afternoon. Thanks to Julia and Jen for taking the service. Thanks to all who helped during the weekend and to everyone for coming. We are already planning for next Christmas – if you have any ideas or suggestions, please let us know.

## Carol Concert on Christmas Eve

Sixty or so people came to the service. Thanks to Pete and Jen for organising and leading the service and to those who read the lessons, especially Annika, Jack and Lucy. Thanks to Mary for playing the organ and Cecilia and Andy for organising the liquid refreshments! Thanks everyone for coming – we had a packed church!

## AGM of ACC

All parishioners are invited to the Annual General Meeting of the Stanford with Orleton Area Church Committee at 7pm on Thursday 2nd May – put the date in your diary and try to attend. As an added incentive refreshments will be served!

## Whist Drives

There will be whist drives at the village hall at 7.30pm on Tuesday 20th February and Tuesday 19th March.

## Tenbury Food Bank

The box in the lobby at St Mary's continues to be used – thank you for all who have contributed – please keep your donations coming.

## St Mary's church

St Mary's is now open every day from dawn to dusk. The front door will be open (please do not shut) and the main door will be closed but unlocked. Please visit and sign the visitors book. We are getting visitors from all over the world who are delighted to have the church open and comment on its beauty. We recently had a visitor from Hollywood, California – looking for filming locations?

By the time you read this we will have installed a Payaz debit/credit card reader on a trial basis near the font – please use it to make donations to St Mary's at any time.

## Volunteers please – again

We still need volunteers for the area church committee. Robin (01886 853295) is happy to explain what is involved and you are welcome to attend one of our meetings so that you can see what it is like. We still need people to organise and assist.

Robin is particularly looking for a churchwarden to assist him and take over – dare you volunteer? While it would be great to have a volunteer from Stanford, you can come from anywhere in Teme Valley South. You should be confirmed!

*Robin Dean*

## Rock Bridge Club

Every Sunday at 7pm  
at Rock Village Hall  
New members welcome  
Phone 07854 951330

## Chimney Sweep

Andy Johnson

01886 821933  
07798 790913

[www.andysweeps.com](http://www.andysweeps.com)

- Certificate issued
- Weekend/evening sweeps
- Traditional brush/power sweep
- Stove maintenance



REGISTERED MEMBER  
[www.instituteofchimneysweeps.co.uk](http://www.instituteofchimneysweeps.co.uk)



## Home Tutoring



KS2 English, Maths and French  
English Literature and Language  
to A Level

Proofreading and essay-writing  
guidance for adults

Latin and Classical Greek to GCSE  
Beginners' piano lessons

We can offer online lessons

Paul Tiffany MA, PGCE  
Catherine Tiffany MA, PGCE

Both DBS checked  
01885 410229  
[pltiffany@aol.com](mailto:pltiffany@aol.com)

## Bowling

Keep fit and have fun!  
@ Brimfield and Little Hereford  
Bowling Club  
Call Josie Ward on 01584 881435

## Ridgeback House

A family holiday home  
in Mullion, Cornwall

A fantastic base for surfing, golf  
and walking the Coastal Path

Sleeps 10

Small party and short break discounts

Late deals available

[caroline@coppicehouse.co.uk](mailto:caroline@coppicehouse.co.uk)  
[www.ridgebackmullion.co.uk](http://www.ridgebackmullion.co.uk)



## Harriett Baldwin MP

Member of Parliament for West Worcestershire

Harriett Baldwin MP can help constituents  
with a wide range of issues.

To contact Harriett, please write to her at the House of Commons, email [harriett.baldwin.mp@parliament.uk](mailto:harriett.baldwin.mp@parliament.uk) or call her constituency office on 01684 585 165.

✉ [harriettbaldwin.com](http://harriettbaldwin.com)  
📘 [facebook.com/harriettbaldwin](https://facebook.com/harriettbaldwin)  
🐦 @hbaldwin  
📷 @harriett.baldwin



# A magic carpet ride



*The cast of Aladdin, this year's pantomime at The Regal, Tenbury*

*Photo Charlie Kirkpatrick*

The last time I went to a pantomime, over twenty years ago, I sat next to a little boy. As the lights dimmed and the curtain began to rise, he exclaimed "I think this is going to be good".

One night just before Christmas, sitting in the Regal in Tenbury and waiting for the curtain to rise on *Aladdin*, and without that little boy's optimism, I thought "This had better be good". It was!

*Aladdin* had everything a pantomime should have. A villain, the devious failed magician Bjorn Narstee. A handsome hero, Aladdin, a budding singer from Tenburyania. A beautiful heroine, Princess Holly, daughter of the evil Queen Mistletoe. And of course a dame, Aladdin's washerwoman mother Betty Bagwash ("you can call me Bagggy"), a splendid creation with ever more flamboyant costumes and a nice line in double entendres.

There was plenty of singing and dancing, lots of boeing and "he's behind you" from the audience and even a magic carpet ride to the icy fjords of Norway. There was slapstick from the three policemen and a wonderful scene in Betty Bagwash's laundry where Queen Mistletoe was variously stretched and shrunk in a washing machine – a triumph for the set designers.

The plot is simple. Aladdin falls in love with Princess Holly, who is promptly grounded by her mother. Bjorn Narstee, posing as Aladdin's uncle,

whisks the boy away to the fjords where he finds the magic lamp in the Cave of Groans and releases the delightful Genie of the Lamp who promises to grant his every wish. Back in Tenburyania, Aladdin reveals his new-found wealth to his mother and Queen Mistletoe, who agrees to let him marry Princess Holly – but nasty Bjorn, disguised as a lamp seller, persuades Holly to swap the old lamp for a shiny new one. Now Bjorn is in control of the Genie but after some more slapstick and a thrilling sword fight, good triumphs over evil and the ending is happy. Bjorn Narstee is turned into Bjorn Nicey and love is all around.

It was good to see so many local children taking part, running around the stage dressed as street urchins, dancing in shiny costumes and creeping about as evil little trolls. The spider who crept up on Aladdin in the cave was a real star.

The sets, including Norwegian fjords and mountains and the Tenburyania Pump Rooms, were fabulous and the special effects – thunder and lightening, bangs and flashes and of course the magic carpet ride – were outstanding.

At the end of the evening it seemed that everyone – the actors, the musicians, the technicians and the audience – had thoroughly enjoyed themselves. Roll on next year's pantomime, *Cinderella*.

SG



# Films at Hanley Village Hall

## Saturday 24th February, 6.30pm My Week with Marilyn

Colin Clark worked as a lowly assistant on the set of *The Prince and the Showgirl*, the film that famously united Sir Laurence Olivier and Marilyn Monroe, who was on honeymoon with her new husband Arthur Miller. When Miller leaves England, Colin introduces Marilyn to some of the pleasures of British life.

Stars **Michelle Williams, Eddie Redmayne**  
Director **Simon Curtis**

£15 per person to include one-pot dishes including a pheasant pie. Meal at 6.30, please bring your own booze. Film only at 7.30pm.

Book with Trace on 07972 183164



## Saturday 6th April, 6.30pm The Great Escaper

In the summer of 2014 octogenarian Bernie Jordan staged a "great escape" from his care home to join fellow war veterans on a beach in Normandy, commemorating their fallen comrades.

Stars **Michael Caine, Glenda Jackson, Danielle Vitalis**  
Director **Oliver Parker**

Please bring food to share and your own booze.

Food at 6.30, film only at 7.30

£5 per person, no need to book



## PAINFUL FEET?

Call The Foot Nurse

- Routine Nail trimming
- InGrowing Toenails
- Hard Skin reduction
- Verrucae
- Diabetic Footcare
- Fungal Nails
- Corn Reduction
- Cracked Dry Heels

Contact: **Anne Hull**, BA(Hons), RN,  
DipCCHP, MFSPract.

Anne is a registered nurse and foot health practitioner.

E: [anne@foot-nurse.co.uk](mailto:anne@foot-nurse.co.uk)

W: [www.foot-nurse.co.uk](http://www.foot-nurse.co.uk)

*Foot*  
Nurse



**Complete Footcare - Nurse your feet at home**

Area covered: Tenbury Wells, Ludlow, Cleobury Mortimer, Bromyard, Leominster, Far Forest and surrounding areas



Tel: **07929 115 084**



### What's Lent about?

Lent may originally have followed Epiphany, just as Jesus' sojourn in the wilderness followed immediately on from his baptism, but it soon became firmly attached to Easter. It became the principal occasion for baptism and for the reconciliation of those who had been excluded from the Church's fellowship for whatever reason. This history explains the characteristic notes of Lent – self-examination, penitence, self-denial, study and preparation for Easter.

During this time, as the candidates for baptism were instructed in Christian faith and as penitents prepared themselves, through fasting and penance, to be readmitted to communion, the whole Christian community was invited to join them in the process of study and repentance, the extension of which over forty days would remind them of the forty days that Jesus spent in the wilderness, being tested.

### Rural Mission Area Lent Reflections

This year across the rural mission area (Wyre Forest West, Four Rivers and Teme Valley) we'll be following a book in the Church of England's Pilgrim series based around the creeds. The sessions are as follows:

- Session 1 What are the creeds?
- Session 2 God as Trinity
- Session 3 Fully God and fully human
- Session 4 Crucified, risen, ascended
- Session 5 I believe in the Holy Spirit
- Session 6 One holy, catholic and apostolic Church

We'll be having Lent Groups during the day and the evening, both in person and online. There should be a time that will be suitable for everyone – more details will follow as times and locations are currently being finalised. Feel free to mix and match to suit your commitments. There's no need to do any preparation, just bring yourself, your friends and a Bible. If you can't join the course but would like to join in, let us know as we should be able to provide a course booklet.

If you would like any more details about the Lent Groups then please contact any of the ministry team below:

Rev'd Sallie Butcher on 01299 896837 or email [sallie@psc-abberley.co.uk](mailto:sallie@psc-abberley.co.uk)

Rev'd Julia Curtis on 01886 853286 or email [revjuliacurtis@gmail.com](mailto:revjuliacurtis@gmail.com)

Rev'd David Morris on 01299 896783 or email [revdm777@gmail.com](mailto:revdm777@gmail.com)

## D & G Garden Services

*Contract lawn mowing*

*Hedge trimming*

*Treework*

*Border upkeep*

**For a complete garden service  
telephone G Powell**

**01886 812302**

or

**07951 464408**

## JAB Carpentry & Building Repairs

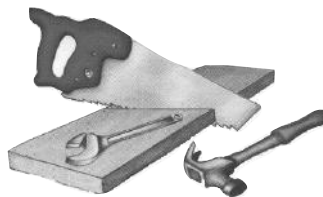
**All aspects of carpentry and building alterations undertaken**

*Free estimates*

**07976 909677**

**01886 853534**

**[jabcarpentry@btinternet.com](mailto:jabcarpentry@btinternet.com)**



# Eggs Benedict pancakes



Try an indulgent twist on a classic breakfast dish with these eggs benedict pancakes. Serves 4

## Ingredients

200g self-raising flour  
1 tsp baking powder  
2 tbsp chopped chives, plus more to serve  
200ml milk  
3 eggs  
25g butter, melted, plus extra for frying

## For the toppings

4 eggs  
About 250g ready-made hollandaise sauce  
4 slices thick cut ham, halved  
small handful spinach leaves

## Method

Whisk all of the pancake ingredients together with some seasoning until smooth.

Put a small knob of butter in a large non-stick frying pan over a medium-low heat and cook until melted and foaming. Pour 2 tbsp of the mixture into the pan and use the back of the spoon to shape it into a 8-9cm round disc. Depending on the size of your pan, you may be able to get 2 or 3 pancakes to cook at the same time. Cook for 2-3 mins on the first side, then flip over and cook for another minute.

Heat oven to its lowest setting. Stack up the cooked pancakes on a baking tray and keep them warm in the oven while you cook the rest. Bring a large pan of water to the boil. Crack each egg into a ramekin, then carefully lower into the water. Poach for 2-3 mins until the whites are set and the yolks are still runny. Drain and repeat with the other eggs. Warm the hollandaise following pack instructions.

To serve, stack the pancakes with a layer of hollandaise, the ham and spinach leaves in between them, then top with a poached egg. Spoon over more hollandaise and top with chives and black pepper.

SG

## ANDREW JELLEY OPTICIANS

Andrew Jelley BSc (Hons) FC Optom  
Teresa Davies FBDO  
Duncan Edwards FBDO  
Alex Lane BSc (Hons) MC Optom

18 Teme Street Tenbury Wells  
tel: **01584 811445**

34/36 High Street Bromyard  
tel: **01885 488259**

email: [reception@ajopticians.co.uk](mailto:reception@ajopticians.co.uk)  
[www.andrewjelleyopticians.co.uk](http://www.andrewjelleyopticians.co.uk)



Clifton Upon Teme Nursery  
and Forest School

OPEN MONDAY - FRIDAY 7.30AM - 6PM

**6 months to 5 years**

Breakfast Club for Clifton Primary School

7.30AM - 8.30AM

Contact **Abi or Rachel on 01886 812380**  
or [Manager@cliftoneyc.co.uk](mailto:Manager@cliftoneyc.co.uk)

# Pancake Day



Tuesday 13th February at 7pm  
at Rochford Village Hall

Come along and enjoy a selection of  
delicious savoury and sweet pancakes!

Just £10 (under 10s half price)  
No bar – please bring your own drink

Please book with Ann on 01584 781317  
Everyone welcome!

# Family Easter Bingo

Saturday 30th March at 3pm  
Hanley Village Hall WR15 8QU

Hamper prizes, bonus ball  
Tea and cake



Cash only



## Manta Dance and Physio

Dance Classes  
and  
Private Physiotherapy

Text 07907 513560  
email [Mantadanceandphysio@icloud.com](mailto:Mantadanceandphysio@icloud.com)  
website <http://mantadanceandphysio.co.uk>  
Visit our Facebook page



## Tenbury Young Farmers' Club Sunday Carvery Lunch

Sunday 4th February  
at Eastham M

**POSTPONED**

07930 929244  
away £9 – please bring a plate



Do you remember when Neil Armstrong walked on the moon?

Do you want to use PCs/laptops/tablets/phones etc to get better deals on insurance or energy,  
to make bookings, to shop online or to use eBay to buy and sell items?

Do you have problems connecting to the internet, printing, organising your files (documents and  
photos), setting up emails, using spreadsheets, producing documents (letters, reports, novels or diaries)?

If you can answer “yes” to these questions, then you need

## Silver Surfer Support

I've been helping individuals and organisations to embrace information technology for over 40 years  
I will visit you in your home or business and assess your needs

The first assessment visit will be free after which I will charge £25 per hour

**Please contact Robin on 01886 853295**

BRAND NEW BABY GROUP!

## TEME VALLEY TOTS!



Every Friday  
during February  
10.30am to 12 noon  
Rochford Village Hall

Tea and cake  
Play and cuddles!

assistanttvspcc@gmail.com



## The Filling Station

Our next meeting is on Thursday 15th February at Eastham Memorial Hall at 7.15 for a 7.30pm start, when a representative from Christian Missionary Fellowship International based at Baxter Church in Kidderminster will be speaking to us.

We look forward to your joining us for this evening of fellowship, worship, teaching and refreshments. If you are not on our mailing list and would like further information or details about our meetings please contact me on [kate.harley6@gmail.com](mailto:kate.harley6@gmail.com).

## Stanford History Group Spring Lectures at Upper Sapey Village Hall

In Spring 2024, starting on 5th February, we are organising a lecture program that we are calling the Spring Cultural Series, which will have a mix of music, Antarctic expeditions and art presented by high quality lecturers in their field.

It's a big change from our autumn geo-political history courses, but the same friendly group will welcome you on Mondays at 7.30pm at Sapey Village Hall WR6 6EU, starting on 5th February. £10 per lecture payable at the door or £40 for the six lecture course

## Eastham Parish Council has a vacancy for a councillor to be filled by co-option

Eastham parish council will consider filling by co-option casual vacancies for a councillor at its next meeting.

Those who are interested in serving the community in this way and want to become a candidate for co-option should obtain an application form for candidacy from the clerk.

Information on eligibility and its schedule of meetings may be obtained from the clerk, Lesley Jenkins, by calling 07942 363070 or by email to [easthamparishcouncil@gmail.com](mailto:easthamparishcouncil@gmail.com).

angel  
gardens

A line drawing of a bouquet of flowers tied with a ribbon.

## Garden Centre and Gift Shop

Bedding plants • Vegetable plants  
Pond plants • Indoor plants  
Garden furniture  
Pots and garden ornaments  
Gifts and local crafts

Tuesday to Saturday 10am to 5pm  
Sunday 10am to 2pm

MILL FARM COUNTRY RETAIL  
Stanford Bridge WR6 6SP

07967 642270  
[louise@angelgardens.co.uk](mailto:louise@angelgardens.co.uk)



Beautiful handmade floral arrangements for any occasion. From Birthdays and Anniversaries to Funeral and Sympathy flowers. I offer a bespoke service, and design all arrangements to your needs.

For a free personal consultation on how I can style your Wedding, please get in touch.

All flowers are grown locally  
at my garden in Rochford.

tel: 07866 377359  
email: [georginasflowers@outlook.com](mailto:georginasflowers@outlook.com)

[www.georginapainterblack.com](http://www.georginapainterblack.com)

Georgina's Flowers



# Tesco Rules

I was given some interesting information in Tesco Tenbury recently which I thought I should share.

Firstly the car park is for Tesco shoppers only. If you want to use the post office, surgery, chemist or other shops in Tenbury you should move your car off site to a parking space elsewhere.

Okay, so I hadn't read the parking notices, just parked and completed my chores. I remember clearly the time when Tenbury was split down the middle about Tesco coming to our wonderful market town. One of the worries, apart from a drop in trade in other shops, was the loss of all those free parking spaces in the old cattle market. We were assured that the Tesco spaces would more than compensate. But not so. I suggested that an hour and a half was too short for visitors to shop in Tesco and explore the town, maybe have a coffee or lunch. What I do not remember being made clear was that the Tesco spaces would be restricted to store shoppers only.

Secondly if you leave your trolley unattended your items will all be returned to the shelves. It is store policy, I was told. If you need the loo or to collect something you have forgotten at the far end of the store, you should leave your trolley at Customer Services.

Tesco has kept its word and employed local

people where possible which is wonderful. It is not quite so loyal about stocking local produce which is a great pity. Tenbury is the Town in the Orchard. It is a farming community and all around there is fresh produce on our doorstep. We even have the vale of Evesham nearby. What a shame that it cannot be a perk of Tenbury Tesco to stock this produce in store. No doubt it is their policy to use the same stockists for all stores.

Luckily there is plenty of other choice in Tenbury, maybe not one-stop but excellent shops offering plenty of variety. So, as I was told in Tesco, I don't have to shop there. Too true.

*Averil Opperman*



## Zed Yoga

Yoga classes at  
**Eastham Memorial Hall**  
For adults of all ages

Please contact Zoe Herington:  
[www.zedyoga.co.uk](http://www.zedyoga.co.uk)  
Tel: 07962 981456

↓ FHT ASSOCIATION FOR YOGA STUDIES

# REGAL

## Coming to the Regal

\*programme as of 17/1/24

**TENBURY WELLS**



**One Life (12A)** 1 Feb



**The Boys in the Boat (12A)** 2-3 Feb



**Next Goal Wins** 8 Feb



**Mean Girls (12A)** 10 Feb

**ON SCREEN**



**Disney WISH** 12 Feb



**THE BEEKEEPER** 17 Feb



**Poor Things (18)** 28 Feb



**LOVE FILM? BECOME A REGAL FRIEND TODAY TO ENJOY CINEMA DISCOUNTS & MORE.**

**LIVE HIGHLIGHTS**



**BARRY WHITE** 14 Feb



**SIMON & GARFUNKEL** 23 Feb



**Spiers & Boden** 29 Feb



**The Christians** 2 Mar

**01584 811442** [www.regaltenbury.co.uk](http://www.regaltenbury.co.uk) [f](https://www.facebook.com/RegalTenbury) [i](https://www.instagram.com/RegalTenbury) [@RegalTenbury](https://www.tiktok.com/@RegalTenbury)  
**REGAL TENBURY, 49 TEME STREET, TENBURY WELLS, WR15 8AE | Reg Charity No. 1148555**

# Citizens Advice South Worcestershire

## What to do if you are having trouble managing your council tax bill

Have you been having trouble making payments towards your council tax bill? Usually, if you are liable to pay council tax your council issues you a bill at the start of the financial year and allows payment to be spread over ten months. If you get behind with payments you will get reminders and eventually the council will seek to obtain a liability order against you if payments are still outstanding and no agreement to pay has been reached.

Once a liability order has been obtained the council can then use a variety of enforcement methods to recover the debt including instructing bailiffs to call and remove goods from your property. The council may also ask for payments to be made that recover the debt by the end of the current financial year.

So what can you do if you think you might struggle with this?

Firstly, it is important to remember that council tax payments should be considered as essential priority expenditure and accommodated in your household budget like rent and other household bills.

If you are on a low income then you need to check if you are entitled to and make a claim for council tax support which can reduce your bill very significantly. If you get universal credit this may include an element for your housing costs

like rent but not council tax support so a separate claim needs to be made for this or you will miss out. It can only be backdated for a certain period of time so don't delay.

You should also ensure that any discounts are applied correctly to the bill. For example if you live alone or you are the only person in the household over 18 then a 25% discount could be applied for single occupancy. There is a range of other discounts that can be applied. See [www.citizensadvice.org.uk/housing/council-tax/paying-council-tax/](http://www.citizensadvice.org.uk/housing/council-tax/paying-council-tax/)

You will need to agree a repayment plan with the council to pay back the debt and should draw up a household budget as a basis for negotiating with the council. If you need help with this, Citizens Advice and other charities providing money advice have various budgeting tools available and can help households to manage multiple debts issues, advising on the best strategy for dealing with them. For more information visit the Citizens Advice website at [www.citizensadvice.org.uk](http://www.citizensadvice.org.uk)

*For further information and advice contact your local Citizens Advice South Worcestershire office on 01684 563611 or visit [www.citizensadvice.wv.org.uk](http://www.citizensadvice.wv.org.uk).*



**CS-PLUMBING.CO.UK**

**07972 435102**

**Are you looking for local professional plumbing services?**

**Contact us and we will get your plumbing fixed quickly and efficiently**

**[chris@cs-plumbing.co.uk](mailto:chris@cs-plumbing.co.uk)**



## TEME VALLEY ACCOUNTS

Cut the costs of your bookkeeping, PAYE, VAT, Sage, tax returns and all related business accounting.

Teme Valley Accounts offers your business cost-effective rates and friendly advice locally

I have many years of experience and many satisfied customers in the region

I will work from your premises or my own

*For a no obligation discussion or visit please call*

**Claire Elliott**

**01584 881708 or mobile 07731 010099**

**email: [Claire.tva-accounts@outlook.com](mailto:Claire.tva-accounts@outlook.com)**

# More Eastham Jottings

## Activities at Eastham Memorial Hall

- Pilates, Tuesdays 1pm and 2.15pm Contact Sue on 07974 343609, sue579@icloud.com for details or a taster session.
- Yoga, ring Zoe on 07962 981456 or see [www.zedyoga.co.uk](http://www.zedyoga.co.uk). Wednesdays at 10am. Taster sessions available.
- Zumba Gold, Lucia on 07709 301030, lu.500@live.co.uk. Wednesdays at 12 noon, just turn up.
- Kung Fu, Adam on 07720 643524, for youngsters on Saturdays at 9.30am.

## Eastham Allotment Scheme

Subscriptions are available *now* for 2024/25. Deliveries are made throughout Eastham and neighbouring villages. All funds go to the local community.

Vegetables include potatoes, onions, runner beans, broad beans, green beans, parsnips, marrows, pumpkins, squash and the polytunnel produces tomatoes, peppers, cucumbers, lettuce etc. There are also herbs of many varieties. Payment is based on a full or half subscription paid electronically with weekly deliveries to your doorstep. Open to all villages and businesses. For further information please contact Celia Adams on 01584 781258 or email [easthamcourt@icloud.com](mailto:easthamcourt@icloud.com)

## Teme Valley Tote

Payments are due on 1st April for the next 12 draws for prizes of £50, £30 or £20 per month.

Eastham subscribers been outright winners for the top prize in the last two draws so make sure you get your name down as soon as possible. 95 signed up last year – households can have more than one go. Please pay in cash (as in previous years) or ring for bank details (Celia on 01584 781258 or [easthamcourt@icloud.com](mailto:easthamcourt@icloud.com)). Don't miss out – remember you've got to be in it to win it! Thanks to Robin for arranging the tote every year and helping Eastham pay over £700 into church funds last year.

## A date for your diary

Quiz time at Eastham Memorial Hall on 20th April. More details next month.

*Celia Adams*

## Congratulations!

Many congratulations to Mike and Celia Adams who became grandparents twice over in December 2023.

- Mark and Sarah's son Thomas William was born on 16th December, and
- Dawn and Phil's son Hayden Michael was born on 17th December.

## Wyvern Roofing

Specialising in all aspects of roofing

- Flat roofing
- Tiling
- Slating
- Lead work
- Single standing seam metal roofing
- Fascia and guttering
- Roofing repairs

Roofing for three generations, with over 40 years experience.

Contact Glyn 07971 092 135 / 01568 615 570  
Josh 07980 496 774

[wavernroofing@live.co.uk](mailto:wavernroofing@live.co.uk)



## Sue's Ironing Service



Collection and delivery arranged

*One-off, occasional or  
regular jobs catered for*

Non-smoker

**01584 781356  
or 07971 530595**

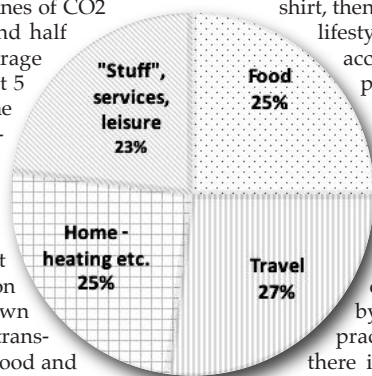
*for a prompt & reliable service*

# Climate change – what can we do?

Given the global scale and frightening complexity of the challenge of climate change, it is easy to become apathetic or cynical about it. However we owe it to our children and grandchildren not to give up. They will have to live with whatever mess we pass on to them. In this final article on climate change, we look at what we, as citizens, can do to help.

Let's start by looking at the "carbon footprint" of a typical citizen – the amount of carbon dioxide (CO2) or its equivalent which we each emit in a year. The UK average is 12 tonnes of CO2 per year. This is about two and half times the footprint of the average person in the world, and about 5 times what is allowable if the world is to keep global warming to less than 2 degrees. So we need to reduce our average emissions by a factor of five – this is a huge change.

The pie chart on the right shows that the typical carbon footprint in the UK breaks down into four roughly equal parts: transport, energy use in the home, food and everything else (largely things we buy and public services provided to us). To reduce our footprint by a factor of 5, we will clearly need to make



big cuts in all four components.

What can we do as individuals? We don't have space here to go into detail, but here are a few key things to consider in each area. Buy an electric car as soon as you can afford one, use public transport where you can and regard flying as a scarce luxury. Make sure your house is well insulated and install solar panels and/or heat pumps if you can. Eat less meat and waste as little food as possible. Don't buy stuff just for the sake of it, go for things which will last, and recycle. If this all sounds rather hair shirt, then remember that it is the wasteful lifestyle to which we have all become accustomed which is wrecking the planet.

There are also many things which we cannot do as individuals, but which require action by government, industry or commerce. For example, switching to an electric car will do little good if much of the country's electricity is generated by burning gas and it will be impractical for many people unless there is a good network of charging points. However the citizen still plays a key role. Governments are answerable to the electorate and tend to shy away from measures which they think will be unpopular. So we all need to insist that we want them to act. Similarly, in a market economy firms will respond to the demands of customers, so vote with your wallet to encourage the sort of behaviour you want.

What is coming is going to be painful, but it is as nothing compared to the pain we will hand on to the next generation if we don't act.

*Trevor Ponman*

## Angel's Aerials

Digital aerial and satellite services

Approved Freesat Retailer/Installer

*Fully Insured and CRB checked*

**Telephone: 01584 811270**

**Mobile: 07974 706732**

**email: paul@angellsaerials.co.uk**

**web: www.angellsaerials.co.uk**

**TemeTalk deadline 18th February**



**Radfield Home Care**

Worcester, Droitwich and Malvern

**SERVICES WE PROVIDE:**

- Live-in care
- Daily care • Day care
- Electronic connected care

- Outings & activities
- Household tasks
- Medication support
- Wellbeing
- Dementia care
- Personal care

Please call us at any time for more information

**01905 427863**

worcester@radfieldhomecare.co.uk  
www.radfieldhomecare.co.uk

# Life in a skip

Sometimes, as you get older, happy thoughts are nudged aside by nasty ones. Should one write about them or not? If they can be helpful maybe, so here goes ...

It is a fact that we will all get old at some stage and we have to face it. My wake-up call came when my mother had to go into a home in Dublin some years ago and we had to sell her house to pay for her care. We got an excellent article with photographs in a daily paper and the house sold quickly.

Then came the problem. I lived abroad, my brother was busy with work and my sister was not going to be left sorting it all on her own.

Into our lives came – The Skip. It was dumped outside the front door. We had just days to clear the house of *everything* or the buyers would not complete. We worked day and night to sort stuff. The big questions were:

Does anybody want this? What can go to charity? Will charities take books? Which books must we keep for posterity? (Our grandfather was a respected Irish politician, Quaker and pacifist.) Does anyone want mum's clothes? (She needed so little in the home.) How many pictures can mum have in the home? (Too few.) Shall we share the rest of the pictures? Furniture? Kitchen stuff? Jewellery?

Anyone who has been through this knows what I am talking about. Anyone who is getting older needs to pay attention! Awful though it may seem now, we all need to clear out stuff and not leave it to our poor children or family or friends when the time comes. Can you think of family



members or friends who want *your* stuff? We were delighted with anything in our day but times have changed.

Into The Skip went masses of kitchen stuff, all the electrical stuff including fridge and washing machine and so many books I felt sick.

We made as many trips to charity shops as we could – an hour's round trip each time. Beautiful porcelain, curtains, bedding, beds, chairs, cutlery, goodness knows what – all went into The Skip.

And that was when it hit me. Our lives end up in a skip. My grandparents' and parents' possessions ended up in one. I understand that we enter and leave this earth with nothing but for some reason it was The Skip that hurt. I felt as if I had betrayed my family history in some way. On the bright side, every bottle on the drinks table was empty by the time we had the job done. There was no food wasted either.

I was challenged with selling or at least getting rid of the final item – a heavy safe in the garage – so the buyers would have the vacant possession they demanded. I sat up all night trying to find someone to take it away. No luck. No coffee left in the house either.

By morning, I had to cede defeat. I rang the estate agents who rang the buyers. I waited anxiously for the call back ... of course the buyers wanted to keep the safe. All that stress for nothing. But at least the last thing in the house did not end up in The Skip.

*Averil Opperman*

# tcs

**Local IT support for local people.**

**Over 35 years of technical  
experience behind our seasoned  
team ... and still going strong**

**Total Computer Solutions**

**01886 853996**

**Computer and laptops installation and set up  
Maintenance contracts and ad hoc repairs  
Please give us a ring**



# The posada's journey through Teme Valley South

The journey of the posada (the family of Joseph and Mary with the donkey) through TVS was inspired by the Clifton, Shelseys and Harpley group of parishes who recently joined Rev'd Julia's remit of pastoral care. For the past few years their posada has travelled around their parishes during Advent and it seemed such a good idea that it was adopted this year in TVS.

The family came with prayers for those who, like them, were under control of foreign rule, homeless and seeking shelter, forced to flee persecution and shunned by relatives at their time of need. The Christmas story that travelled with them highlighted these often overlooked aspects.

The family started at Stanford, was blessed during the Christmas Tree Festival and began their month's journey to the midnight service at Rochford on Christmas Eve. They came to Hanley William's Christmas morning service then rested at Kyre until Epiphany when the three Magi joined them.

The donkey begins the tale of their travels. His name is Jeff (he whispered it to Annika at the Carols at Stanford as a Christmas Eve gift). He thanks them for the singing that Mary said reminded her of angels (and she should know). Being surrounded by prayers and songs really helped them

as they travelled, not sure where they were going next – Jeff got quite confused as they retraced their steps several times over the month. (In fact he thought the travel agent's sat-nav must have been obsolete as they travelled in circles). They all agreed that if you would like to remember their journey again next year you should find them a different travel agent.

Joseph then adds his impressions of the journey and is very grateful that not everyone claimed the gold coins they had saved for the lodging as they have enough to keep them going until Mary is fit enough to travel on. In fact if you visited us at Kyre you may find some for yourself. Mary thanks you for the peace they found as they journeyed: it was good to share their experience with you as life has been difficult in the past few months. The churches were lovely and filled with prayers and singing (though a trifle chilly overnight). But the houses they stayed in were warm and they even got to see Tenbury when the river was not in flood! Jeff was very weary at the end of that journey.

So thanks to all who shared the journey and hopefully the family will be back next year. (I wonder what route the new travel agent will arrange?)

*Maggie Kingston*





*Richard Haines*



## THE WORCESTERSHIRE CHIMNEY SWEEP

**07752 116629, 01584 781358**

lostcity5@hotmail.co.uk  
www.theworcestershirechimneysweep.co.uk

Traditional & Power Sweeping Services  
Certified Chimney Sweep  
Insurance Recognised Certificate Issued  
Stove Servicing  
£2million Public Liability Insurance  
Internal and External Stove Installation





## Marika Harding

DO

# OSTEOPATH

- Cranial Osteopathy
- Traditional Osteopathy
- Treating symptoms and the background condition

## Hanley Broadheath

# 01886 853080

# Teme Valley Wildlife

One of Great Britain's unique features is the wide scatter of common land found across its nations. Such land is special because it is open to all. Although most lies within national parks or areas of outstanding natural beauty, common land can be found anywhere, even in cities, perhaps most notably on Hampstead Heath in London. Today it covers

4.8% of Britain's land area, with 546,000 acres registered in England alone. This may sound a lot, but back in 1550 50% of England's acreage had been subject to common rights. This had long been vital to the rural economy and Rights of Common were first enshrined in law in 1215 by Magna Carta.

Owners of common land such as the National Trust, utility companies, national parks or commoners' associations are each obliged to uphold commoners' rights, which may include the right to graze livestock, gather wood or bracken, cut peat, dig for coals, sand or gravel or to fish in



ponds and streams. Longstanding grazing rights have allowed the creation and survival of locally distinct livestock breeds such as Swaledale, Herd-wick and Shetland sheep and Exmoor ponies. Because of the traditional ways in which the land has been managed over many centuries, commons support a greater diversity of wildlife than any

other category of farmland. It is therefore no surprise that 21% of England's Sites of Special Scientific Interest are to be found on them, a testament to the wild plants, butterflies, birds and animals who make their homes there.

I have mentioned common land in these articles before, covering meadow saffron on Ewyas Harold Common in Herefordshire, hay meadow plants on Oldwood Common in Worcestershire and golden-ringed dragonflies on Catherton Common in Shropshire. What I hadn't been so aware

*Continued on page 24*

## Meadows Soft Furnishings

by Tracey Birks

Bespoke handmade curtains, blinds,  
soft furnishings and lampshades  
designed and made for you

No obligation home consultation

[tracey@meadows-soft-furnishings.co.uk](mailto:tracey@meadows-soft-furnishings.co.uk)

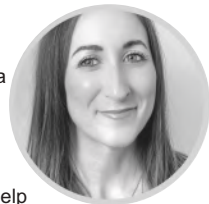
[www.meadows-soft-furnishings.co.uk](http://www.meadows-soft-furnishings.co.uk)

01886 812583 or 07831 818104



**Marieke Smith offers  
professional, no obligation advice  
on mortgage  
and protection.**

Whether you are buying a new property, looking to remortgage or just want to discuss your options, contact Marieke to discuss how she can help make your mortgage work for you.



07774 015706

[marieke.smith@justmortgages.co.uk](mailto:marieke.smith@justmortgages.co.uk)

**Just  
Mortgages**

THINK CAREFULLY BEFORE SECURING OTHER DEBTS AGAINST YOUR PROPERTY. YOUR PROPERTY MAY BE REPOSSESSED IF YOU DO NOT KEEP UP REPAYMENTS ON YOUR MORTGAGE.

of was their importance as sites of archaeological interest. Some 3,000 scheduled ancient monuments receive protection on British commons. These range from Mesolithic flint works, Stone Age henges, circles and standing stones, Bronze Age barrows, dykes, roundhouses and pounds and



**ROB NORTHWOOD**  
**RENOVATION AND REPAIR**  
**OF TRADITIONAL BUILDINGS**

Oak-frame Restoration and Decoration

•  
Extensions and Oak Porches

•  
Stonework and Roofing

•  
Pointing and Chimney Repairs

•  
Lime Work

•  
Complete Renovations,  
Small Repairs and Maintenance

•  
Over 20 Years' Experience

01885 410425

07811 288986

info@robnorthwood.com

www.robnorthwood.com

Roman camps to more modern industrial and military relics. The Cleve Hill memorial to those airmen, both British and German, who lost their lives in World War II when their aeroplanes crashed into the hill, is a local example of the latter.

Twenty-first century concerns make commons important for biodiversity, maintaining fragile upland ecosystems, absorbing carbon, mitigating floods, promoting cultural heritage and enhancing personal wellbeing through access to nature. That's a tall order but 88% of English common land is already nationally or internationally important for its wildlife, landscape or archaeology so there's no doubt that these semi-wild spaces can rise to meet those expectations.

The next meeting of the Teme Valley Wildlife Group will be on Thursday 8th February at 7.30pm at Stoke Bliss and Kyre Village Hall. We welcome back husband and wife team Russell and Audrey Price who will be presenting a talk called "African adventures – a photographic journey". Everyone is welcome – just £3 on the door.

*Stephanie Mcroft*

*For up-to-date information on what wildlife is being seen in the area, or to give us your sightings or comments, visit our Facebook page. Our programme of events, bird survey and archive photographs are available on our website [www.temevalleywildlife.co.uk](http://www.temevalleywildlife.co.uk) We normally hold meetings on the second Thursday of the month. All are welcome. Contact us by email at [twwg@outlook.com](mailto:twwg@outlook.com).*



**Mowing2Growing**  
**Gardening Services**

Garden tidy including mowing, flower bed tending and vegetable garden clearance

Hedge trimming

Seasonal hedgelaying

Fencing

Small landscape work, including brick and stone walling, patios and paths

Handyman services

**Reliable and Friendly Service**

**01885 410625 / 07778 818808**



**CHORLEY'S**

FINE ART AUCTIONEERS & VALUERS

Regular fine art & antiques sales

International online bidding

No charges for unsold lots

Extensive free parking & café

Insurance & probate valuations

Contact us for a free  
auction valuation

01452 344499


enquiries@chorleys.com

**www.chorleys.com**




**rewired**  
ELECTRICAL SERVICES  
SERVING THREE COUNTIES SINCE 1996

**For an Affordable  
& Reliable Electrician  
Choose REWIRED!**

 The Power Behind  
Teme Valley....

**01886 853 011**  
**07421 748 288**  
www.rewired-worcester.co.uk



## Kyre Park Garden



The Park consists of five lakes, waterfalls, follies, a Grade II listed Jacobean barn, a ruin and a Norman dovecote

**Open daily 10am to 5pm**

*Suggested donation of £3.50*

Dogs are welcome in the Park and allowed off leads if kept under control  
*No cycles allowed in the grounds*

Kyre Park, Tenbury Wells WR15 8RW

## Advertise in this space

for just **£70** a year

Telephone 01568 750665 or email [ronsmum@btconnect.com](mailto:ronsmum@btconnect.com)

TemeTalk is funded entirely by advertising revenue – so we need your support!

# Tenbury Transport Trust

Patron Angela Brinton, Deputy Lord Lieutenant of Worcestershire (Rtd)

**Awarded Best Community Transport West Midlands 2021**

**Do you need to travel somewhere? Shopping, medical appointments, visiting friends?  
Are you struggling to use public transport?  
Or perhaps you don't have access to public transport?  
Then we may be able to help**

Established as a charity in 2014, Tenbury Transport Trust aims to meet the transport needs of **all ages and abilities** in Tenbury Wells and the surrounding area. We use cars and **wheelchair accessible mini buses** and provide a safe door-to-door service

**It costs just £5 per person per year to become a member so give us a ring today on**

**01584 810491**

Our office is at 34 Teme Street, Tenbury Wells, WR15 8AA  
We are open Monday to Friday from 9am to 1pm  
email [admin@ttrust.org.uk](mailto:admin@ttrust.org.uk) website [www.ttrust.org.uk](http://www.ttrust.org.uk) Follow us on Facebook

**If you would like to become part of this amazing organisation as a volunteer please get in touch on 01584 810491**

## Farm Community Network

Confidential phone line 7am to 11pm

**0845 367 9990**

**Samaritans**

**01905 21121/0345 909090**

Free confidential support and advice

## Tenbury & District Carers Support Group

meets on the 4th Wednesday of every  
month from 10.30 am to 12 noon  
at Penlu Sports Centre

*It's available to support all carers*

**01886 853633**

## HWS PEST CONTROL



20 years' experience  
Fully insured and licensed



- ★ Rats ★ Mice
- ★ Wasps ★ Hornets
- ★ Bees ★ Fleas
- ★ Flies ★ Clothes moths
- ★ Moles ★ Woodworm

Telephone Darren on

**07818 034301**

email [ardy-hwspest@hotmail.co.uk](mailto:ardy-hwspest@hotmail.co.uk)



Servicing and repairs for all your garden machines  
including lawn mowers, quad bikes,  
chainsaw sharpening and more

**Mike Savery**

**Call 07795 530995**



## JAMES GORE

e: [GoreGroundworks@outlook.com](mailto:GoreGroundworks@outlook.com)

m: 07904 877 598

Gore Groundworks  
Tenbury Wells

We Specialise in:

- **Groundworks**
- **Footings**
- **Drainage**
- **Landscaping**
- **Site Clearance**
- **Septic Tanks & Soakaways**
- **Driveways**
- **Excavation**



# What's on in Teme Valley South

## February

3rd	Saturday	Tree pruning demonstration, Stanford Village Hall Orchard, 2pm
7th	Wednesday	Eastham Coffee Morning, Eastham Memorial Hall, 10.30am
8th	Thursday	Neighbourhood Lunch, Stoke Bliss & Kyre Village Hall, 12.30pm
11th	Sunday	Snowdrop Songs of Praise, Rochford, 3pm
13th	Tuesday	Pancake Evening, Rochford Village Hall, 7pm
16th	Friday	Eastham Pub Night, 7pm
20th	Tuesday	Whist Drive, Stanford Village Hall, 7.30pm
23rd	Friday	Social & Pub Night, Stoke Bliss & Kyre Village Hall, 7pm
24th	Saturday	Film night at Hanley Village Hall, <i>My Week with Marilyn</i> , 6.30pm
27th	Tuesday	Neighbourhood Lunch, Rochford Village Hall, 12.30pm

## March

6th	Wednesday	Eastham Coffee Morning, Eastham Memorial Hall, 10.30am
14th	Thursday	Neighbourhood Lunch, Stoke Bliss & Kyre Village Hall, 12.30pm
16th	Saturday	Eastham freestyle litter pick
19th	Tuesday	Whist Drive, Stanford Village Hall, 7.30pm
20th	Wednesday	Quiet Day, Holland House, Cropthorne, 10am
22nd	Friday	Social & Pub Night, Stoke Bliss & Kyre Village Hall, 7pm
26th	Tuesday	Neighbourhood Lunch, Rochford Village Hall, 12.30pm
30th	Saturday	Family Easter Bingo, Hanley Village Hall, 3pm

## April

3rd	Wednesday	Eastham Coffee Morning, Eastham Memorial Hall, 10.30am
6th	Saturday	Film night at Hanley Village Hall, <i>The Great Escaper</i> , 6.30pm
11th	Thursday	Neighbourhood Lunch, Stoke Bliss & Kyre Village Hall, 12.30pm
20th	Saturday	Quiz, Eastham Memorial Hall
27th	Saturday	Church and churchyard spring clean, Eastham, 10am
30th	Tuesday	Neighbourhood Lunch, Rochford Village Hall, 12.30pm

## May

1st	Wednesday	Eastham Coffee Morning, Eastham Memorial Hall, 10.30am
2nd	Thursday	AGM of Stanford Area Church Committee, Stanford Village Hall, 7pm
28th	Tuesday	Neighbourhood Lunch, Rochford Village Hall, 12.30pm

**Send items for inclusion to Sandra Griffiths by 18th of the previous month  
telephone 01568 750665 or email [ronsmum@icloud.com](mailto:ronsmum@icloud.com)**

**Deadline for the March issue of TemeTalk is 18th February  
[ronsmum@icloud.com](mailto:ronsmum@icloud.com) or 01568 750665**

# Services

## February/March 2024

Daily prayer continues at 9am and 7pm on Zoom, contact Rev Julia if you would like to join us. The blessings group meets regularly and is co-ordinated by Richard Skerrett who can be contacted on 01886 853099 for details.

The Church of England has a pre-recorded weekly on-line service which can be found by searching 'Church of England Weekly Services' or accessed on their website [www.churchofengland.org/more/media-centre/church-online/weekly-online-services](http://www.churchofengland.org/more/media-centre/church-online/weekly-online-services)

### Services Schedule

#### Saturday 3rd February

2.00pm Worcester Cathedral Visit of the Archbishop of Canterbury

#### Sunday 4th February

10.00am Stanford Holy Communion and Hymns

4.00pm Stanford Evensong

#### Sunday 11th February

10.00am Hanley Childe Holy Communion

3.00pm Rochford Church Snowdrop Songs of Praise

4.00pm Rochford Village Hall Snowdrop tea and crafts

#### Tuesday 13th February

7.00pm Rochford Village Hall Pancake evening

#### Shrove Tuesday

Pancake evening

#### Wednesday 14th February

10.00am Rochford Holy Communion and Ashing

#### Ash Wednesday

Holy Communion and Ashing

#### Sunday 18th February

10.00am Eastham All Age and Holy Communion

2.00pm Walking Church

#### Sunday 25th February

10.00am Rochford All Age and Holy Communion

4.00pm Stoke Bliss Evening Prayer on zoom

#### Sunday 3rd March

10.00am Stanford Holy Communion and hymns

4.00pm Stanford Evensong

# Norris and Miles SOLICITORS

6 Market Square

Tenbury Wells

Worcestershire

WR15 8BW

Tel: 01584 810575

Fax: 01584 811759

[post@norrismiles.co.uk](mailto:post@norrismiles.co.uk)

[www.norrisandmiles.co.uk](http://www.norrisandmiles.co.uk)

## Local Legal Advice

- Property sale and purchase
- Property, building and other disputes
- Wills and Powers of Attorney
- Administration of Estates and Tax Planning
- Business and farm sale, purchase and Tenancies
- Divorce, separation, finance and children
- Prenups and Cohabitation Agreements



Steps Farm  
Clifiton Upon Teme  
Worcester  
WR6 6EN

- Woodburning & Multifuel Stoves
- Stove Spares & Repairs
- Glass, Ropes, Bricks, Baffles, Cleaners
- Chimney Liner Kits & Flue Pipes
- Kiln Dried Logs, Kindling and Firelighters

01886 812452  
[www.is-stoves.co.uk](http://www.is-stoves.co.uk)

Showroom & Online Shop

# A M BRIDGE PROPERTY SERVICES LTD

## MARK BRIDGE

telephone 01584 781356 • mobile 07971 530595

Rochford, Tenbury Wells

- Alterations/extensions • maintenance/repairs
  - Electrical • Brickwork/tiling
  - Carpentry • Patios / garden walls • Plumbing and heating
  - A complete building service • Quality craftsmanship
  - Full public liability insurance • Free quotations
- Professional and qualified advice



For prompt reliable attention and personal service call us!



## NICK CHAMPION

PROPERTY | AUCTIONS | AGRICULTURE | PROFESSIONAL



For independent and professional advice on residential and rural property sales, auctions, lettings, acquisitions and valuations contact Nick Champion

### NICK CHAMPION LTD

16 Teme Street, Tenbury Wells, Worcestershire, WR15 8BA

Tel: 01584 810555 | Fax: 01584 810888

[www.nickchampion.co.uk](http://www.nickchampion.co.uk)

